

Our partners

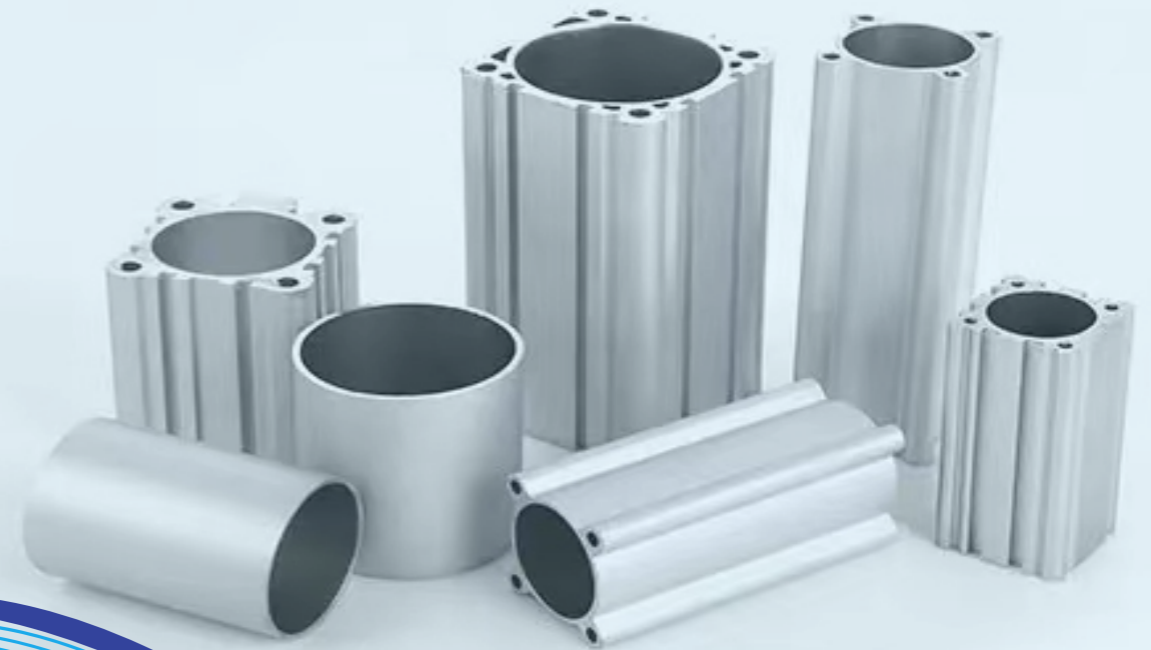
Yuwell
Airtec

Guangshun Electric
Fangda Pneumatic Co.Ltd



NEW BUSINESS BROCHURE

CHINA Professional aluminum alloy cylinder barrel manufacturer



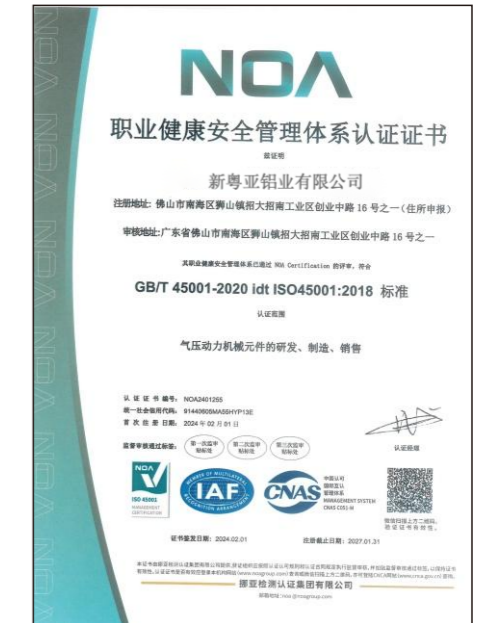
Sunyah Aluminum

E-mail: info@sunyah-alu.com

All for your service needs!



CERTIFICATE OF INSPECTION



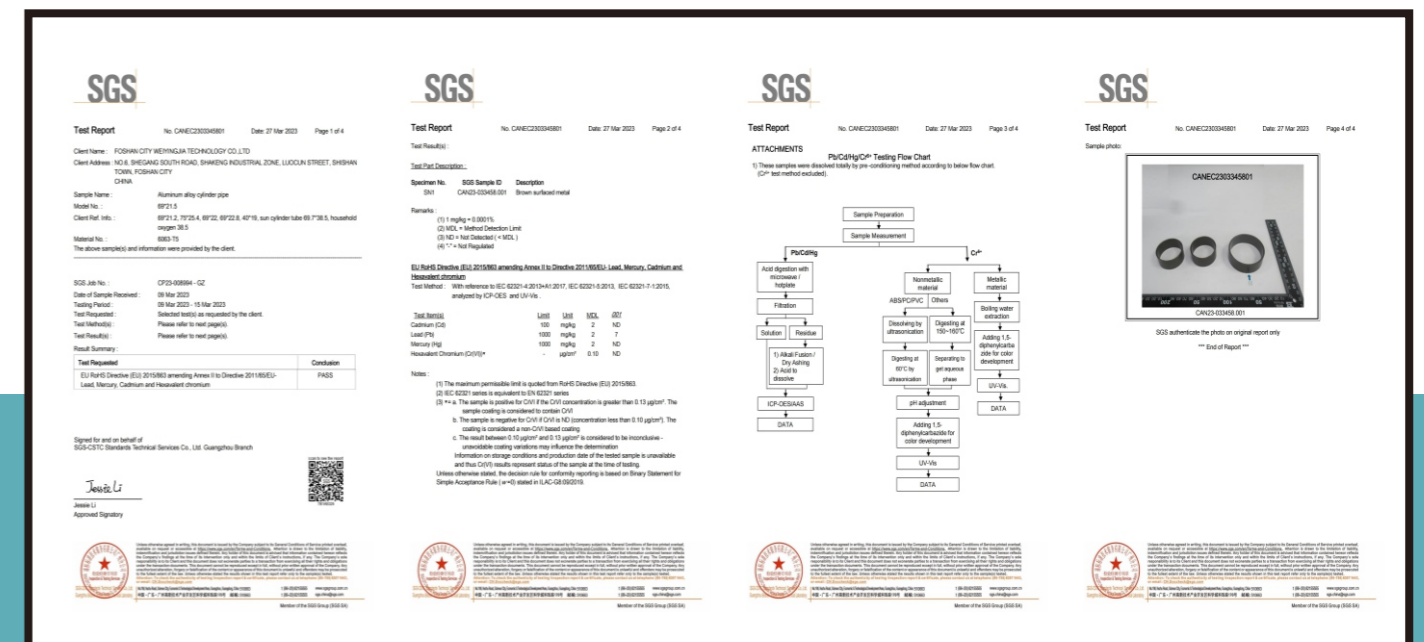
Company Introduction

This sub brand of Sunyah aluminum was established in 2007 and owns the independent brand; We are an innovative enterprise that integrates professional research and development, production, sales, and service, with a factory area of 15000 square meters. The company's main business includes the design and manufacturing of pneumatic aluminum cylinder barrels, automotive shock absorber cylinder barrels, medical oxygen compressor cylinder liners, and military launch tubes.

We have over 100 frontline production technicians, 5 technical engineers, and 10 quality management personnel. The company has 3 cold drawing equipment, 20 deep hole honing equipment, 30 CNC lathes, 10 CNC equipment, and 8 hard oxidation lines.

We conduct strict product testing in every process of aluminum profile extrusion, cold drawing, honing, heat treatment, polishing, sandblasting, CNC machining, and hard anodizing to ensure that the products are qualified and leave the factory.

Sunyah always adheres to the concept of customer first, continuous innovation, and pursuit of excellence, committed to creating high-quality aluminum alloy cylinder barrels. The company's products are exported to more than 20 countries included domestic market, and have received unanimous praise from customers.



production equipment
生产设备

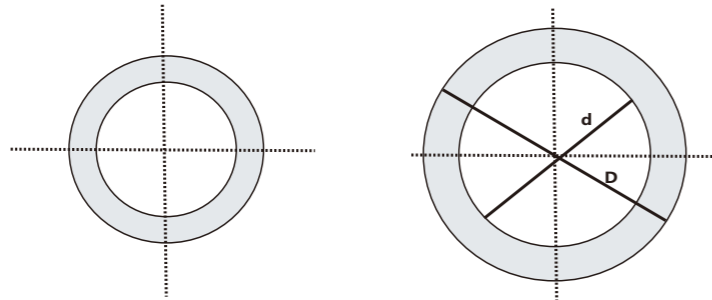


inspection equipment
检测设备



INSPECTION EQUIPMENT

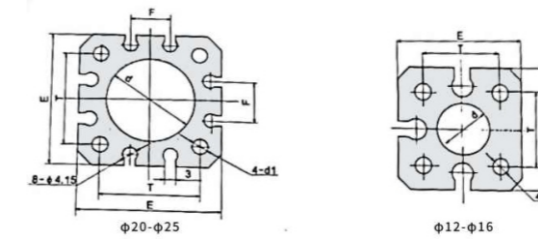
标准圆形气缸管SC Standard Round Cylinder Tube



ID	OD	壁厚(thickness)
φ16	20	2
φ20	25	2.5
φ25	30	2.5
φ32	37	2.5
φ35	40	2.5
φ40	45	2.5
φ50	54	2
φ50	55	2.5
φ50	57	3.5
φ50	59(电缸)	4.5
φ63	67	2
φ63	68	2.5
φ63	69	3
φ63	70	3.5
φ63	73(电缸)	5
φ70	75	2.5
φ70	78	4
φ75	80	2.5
φ75	81	3
φ80	85	2.5

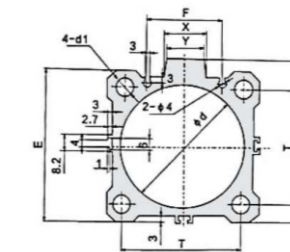
ID	OD	壁厚(thickness)
φ80	86	3
φ80	87	3.5
φ80	92	6
φ100	105	2.5
φ100	106	3
φ100	107	3.5
φ100	110	5
φ110	118	4
φ125	132	3.5
φ125	133	4
φ125	135	5
φ140	150	5
φ160	167	3.5
φ160	170	5
φ180	190	5
φ185	193	4
φ200	210	5
φ250	262	6
φ300	316	8
φ320	336	8

CQSB (φ12-25)系列薄型气缸 CQSB (φ12-25) Series Compact Cylinder



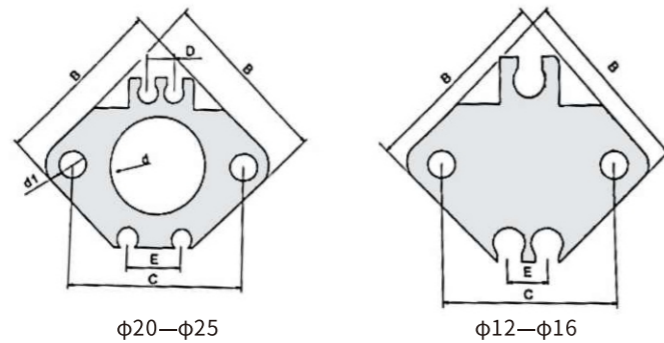
NO	d	4-d1	E	T	F
1	φ12	3.5	25	15.5x15.5	-
2	φ16	3.5	29	20x20	7
3	φ20	5.5	36	25.5x25.5	11
4	φ25	5.6	40	28x28	11

QGY (φ32-125)系列薄型气缸 QGY (φ32-125) Series Compact Cylinder



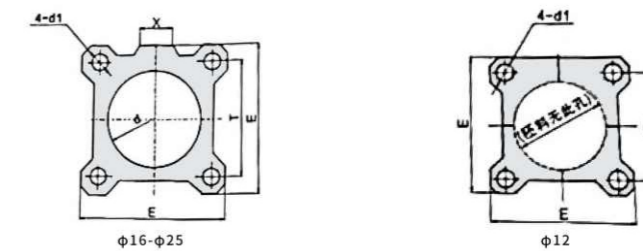
NO	d	4-d1	E	S	T	Y	X
1	φ32	5.5	45	49.6	34x34	13.9	14.8
2	φ40	5.5	52	57	40x40	15	17
3	φ50	6.6	64	71	50x50	18	20
4	φ63	9	77	84	60x60	19	21
5	φ80	11	98	104	77x77	26	37.5
6	φ100	11	117	123.5	94x94	26	37.5
7	φ125	13.5	142	153	114x114	32	37.5

CQ2 (φ12-25)系列薄型气缸
CQ2 (φ12-25) Series Compact Cylinder



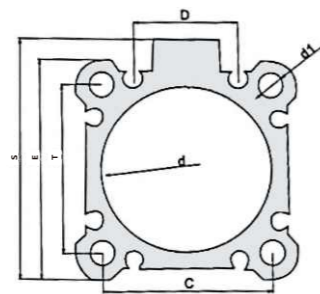
NO	d	d1	A	B	C	D	E
1	φ12	3.5	-	25	22	-	5.3
2	φ16	3.5	-	29	28	-	5.3
3	φ20	5.5	-	36	36	5.6	11
4	φ25	5.5	-	40	40	5.6	12

CQ2 (φ12-25)系列无磁开关薄型气缸
CQ2 (φ12-25) Series Non-Magnetic Switch Compact Cylinder



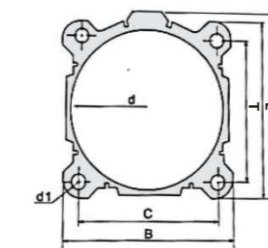
NO	d	E	T	4-d1	X
1	φ12	25×25	15.5×15.5	φ3.5	-
2	φ16	29×29	20×20	φ3.5	-
3	φ20	36×36	25.5×25.5	φ5.5	9.4
4	φ25	39.8×39.8	28×28	φ5.5	10

CQ2 (φ32-100)系列薄型气缸
CQ2 (φ32-100) Series Compact Cylinder



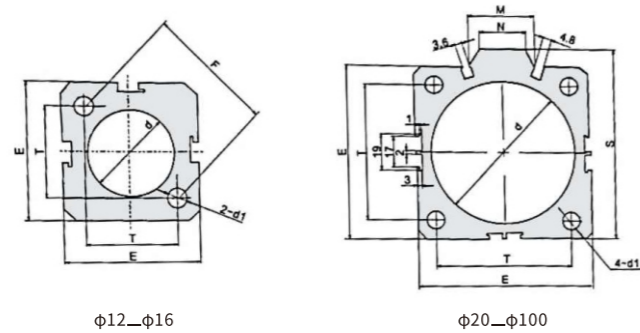
NO	d	d1	S	E	T	D
1	φ32	5.5	50	45	34x34	19.8
2	φ40	5.5	57	52	40x40	24.6
3	φ50	6.6	71	64	50x50	29
4	φ63	9	84	77	60x60	38
5	φ80	11	104	98	77x77	48
6	φ100	11.5	123.4	117	94x94	63

CQ2 (φ125-200)系列大缸径薄型气缸
CQ2 (φ125-200) Series Large Diameter Compact Cylinder



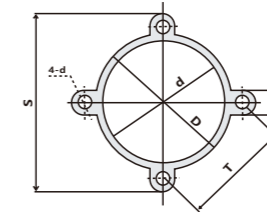
NO	d	d1	A	E	T
1	φ125	13	153	142	114x114
2	φ140	12	168	158	128x128
3	φ160	14	188	178	144x144
4	φ180	19.5	203.5	196.6	161.6x161.6
5	φ200	19.5	225.5	217.6	181.6x181.6

SDA ($\phi 12-100$) 系列薄型气缸
SDA ($\phi 12-100$) Series Compact Cylinder



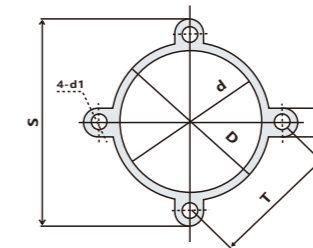
NO	d	d1	S	E	T	F	N	m
1	$\phi 12$	4.3	-	25	16.2	23	-	-
2	$\phi 16$	4.3	-	29	19.8	28	-	-
3	$\phi 20$	4.3	36	34	24x24	-	10	11.3
4	$\phi 25$	5.2	42	40	28x28	-	10	12.6
5	$\phi 32$	5.2	50	44	34x34	-	15	18
6	$\phi 40$	6.9	58.5	52	40x40	-	16	21.3
7	$\phi 50$	6.9	71.5	62	48x48	-	20	30
8	$\phi 63$	6.9	84.5	75	60x60	-	20	28.5
9	$\phi 80$	10.4	104	94	74x74	-	26	36
10	$\phi 100$	12.4	124	114	90x90	-	26	35

SU-6430 ($\phi 32-100$) 系列米字型气缸
SU-6430 Standard ($\phi 32-100$) Series Mickey Mouse Cylinder



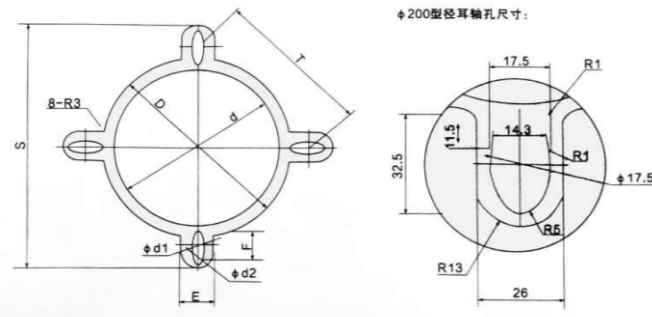
NO	d	D	T	S	E	4-d
1	$\phi 32$	$\phi 36.6$	33×33	56.5×56.5	10	$\phi 5.2$
2	$\phi 40$	$\phi 44.5$	37×37	64×64	10	$\phi 5.2$
3	$\phi 50$	$\phi 54.8$	47×47	78.5×78.5	10	$\phi 5.2$
4	$\phi 63$	$\phi 68$	56×56	91×91	12	$\phi 6.8$
5	$\phi 80$	$\phi 85.8$	70×70	117×117	16	$\phi 8.7$
6	$\phi 100$	$\phi 106$	84×84	135×135	17	$\phi 8.7$

SI-6431 ($\phi 32-100$) 系列米字型气缸
SI-6431 Standard ($\phi 32-100$) Series Mickey Mouse Cylinder



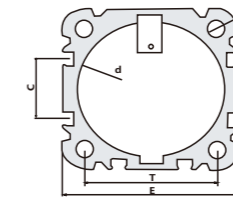
NO	d	D	T	S	E	4-d
1	$\phi 32$	$\phi 36.6$	32.5×2.5	56.5×56.5	10	$\phi 5.2$
2	$\phi 40$	$\phi 44.5$	38×38	64×64	10	$\phi 5.2$
3	$\phi 50$	$\phi 54.8$	46.5×46.5	78.5×78.5	12	$\phi 6.8$
4	$\phi 63$	$\phi 68$	56.5×56.5	94×94	12	$\phi 6.8$
5	$\phi 80$	$\phi 85.8$	72×72	118×118	14	$\phi 8.7$
6	$\phi 100$	$\phi 106$	89×89	145×145	15	$\phi 8.7$

B系列(φ125-200)大缸径米字型气缸
Mickey Mouse-B(φ125-200) Series Large Diameter Cylinder



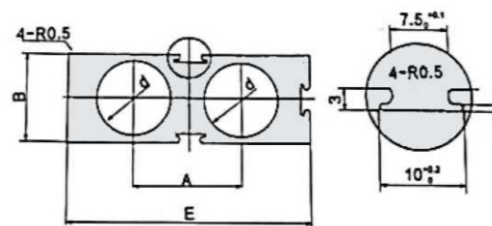
NO	d	D	T	S	d1	d2	E	F
1	φ125	φ132	110x110	180×180	φ12	φ7	18	20
2	φ160	φ168.5	140×140	232×232	φ17.5	φ11	25.5	25
3	φ200	φ214	176×176	291×291	-	-	26	32.5

DNC(φ40-100)系列欧洲标准双轴电缸
DNC(φ40-100) Series Of European Standard Double Shaft electric Cylinder



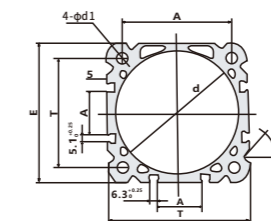
NO	d	E	T	C	D	d1-4
1	φ40	53×53	38×38	17	6	φ4.2
2	φ50	64×64	46.5×46.5	22	10	φ6.9
3	φ63	74×74	56.5×56.5	28	10	φ6.9
4	φ80	95×95	72×72	33	12	φ8.9
5	φ100	110*110	89×89	61	15	φ8.9

TN(φ10-50)系列双轴气缸
TN(φ10-50) Series Double Shaft Cylinder



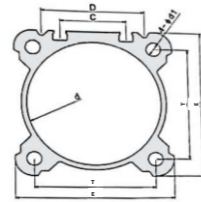
NO	d	E	A	B
1	φ10	42	18	17
2	φ16	54	24	21
3	φ20	62	28	25
4	φ25	73	34	30
5	φ32	96	42	40
6	φ40	112	56	48
7	φ50	135.5	60.5	58

DNC6431(φ32-125)系列欧洲标准气缸
DNC6431(φ32-125) Series Of European Standard Cylinder



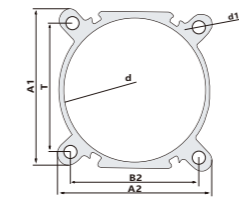
NO	d	E	T	A	d1-4
1	φ32	44×44	32.5×32.5	8.2	φ5.1
2	φ40	51×51	38×38	11	φ5.1
3	φ50	64×64	46.5×46.5	17	φ6.7
4	φ63	75×75	56.5×56.5	26	φ6.7
5	φ80	93×93	72×72	28	φ8.7
6	φ100	111×111	89×89	35	φ8.7
7	φ125	133×133	110×110	49.6	φ10.3

DSBC (φ32-125)系列标准气缸
DSBC (φ32-125) Series Standard Cylinder



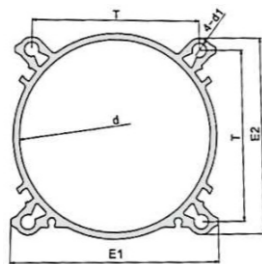
NO	d	4-d1	T	E	C	D
1	φ32	φ5.3	45	32.5	13.5	27
2	φ40	φ5.3	53	38	17	34.9
3	φ50	φ6.8	63	46.5	22	38
4	φ63	φ6.8	74	56.5	31	48.5
5	φ80	φ8.9	92	72	35	60.5
6	φ100	φ8.9	109.5	89	48	78
7	φ125	φ10.3	134	110	54	90

SAI (φ32-160)系列米字型气缸
SAI (φ32-160) Series Mickey Mouse Cylinder



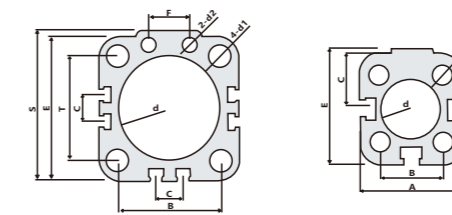
NO	d	A1	A2	T	d1-4
1	φ32	46.2	42.5	32.5	5.3
2	φ40	52.5	48	38	5.3
3	φ50	61.5	58.5	46.5	7
4	φ63	71.5	68.5	56.5	7
5	φ80	87	86	72	8.7
6	φ100	105.4	101	89	10.5
7	φ125	131.4	128.5	110	-
8	φ160	171	171	140	-

欧洲标准米字型气缸A系列
LMIC European Standard Mickey Mouse Cylinder A Series(φ32-125)



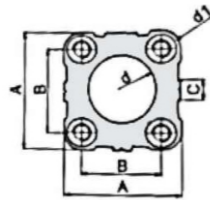
NO	型号CODE	ID	E1	E2	T×T	4-d1
1	LMIC-032	32	45	42	32.5×32.5	5.4
2	LMIC-040	40	52	48	38×38	5.4
3	LMIC-050	50	60	59	46.5×46.5	7.4
4	LMIC-063	63	72	70	56.5×56.5	7.4
5	LMIC-080	80	87	85	72×72	7.5
6	LMIC-100	100	106	102	89×89	7.5
7	LMIC-125	125	134	130	110×110	11.2

ADVU (φ16-80)系列气缸
ADVU (φ16-80) Series Cylinder



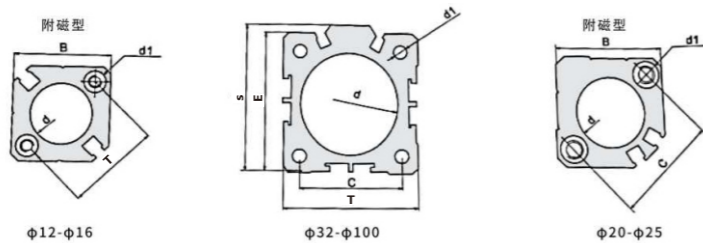
NO	d	4-d1	2-d2	E	T	C	S	F
1	φ16	5.3	-	29	18	14	30	-
2	φ20	6.5	-	36	22	18	37.5	-
3	φ25	6.5	-	40	26	20	41.5	-
4	φ32	9	6	50	32	9	52	12
5	φ40	9	6	60	42	13.6	62.5	15
6	φ50	11	7	68	50	13.6	71	20
7	φ65	15.5	10	87	62	13.6	91	21
8	φ80	15.5	10	107	82	13.6	111	22

ACQ-B (φ12-25)系列薄型气缸
ACQ-B (φ12-25) Series Compact Cylinder



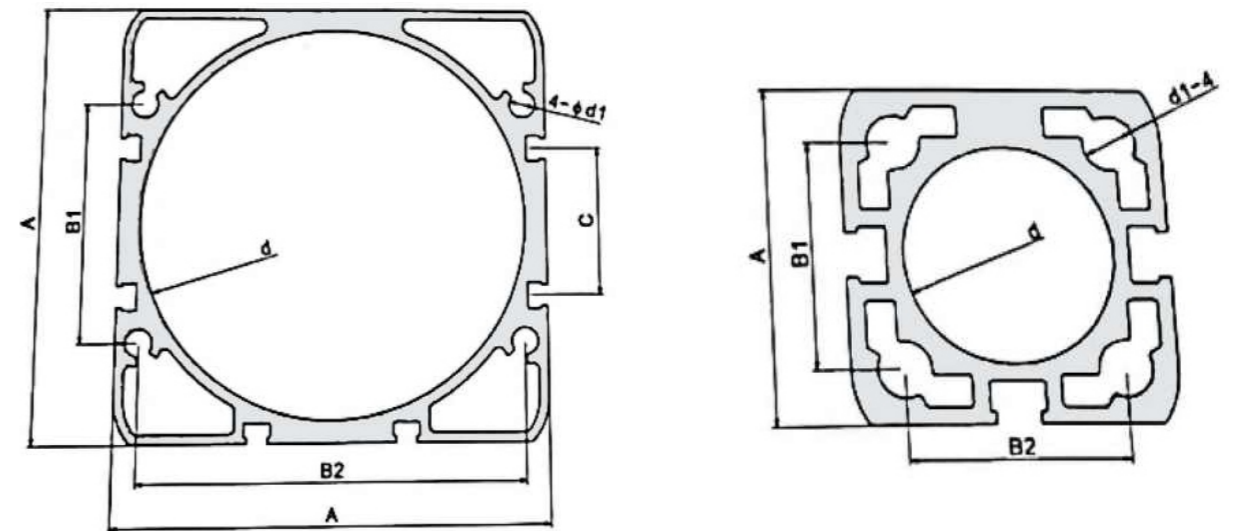
NO	d	d1	A	B	C
1	φ12	3.5	25	15.5	5.6
2	φ16	3.5	29	20	5.6
3	φ20	5	36	25.5	6
4	φ25	5	40	28	6

ACQ-A (φ12-100)系列薄型气缸
ACQ-A (φ12-100) Series Compact Cylinder



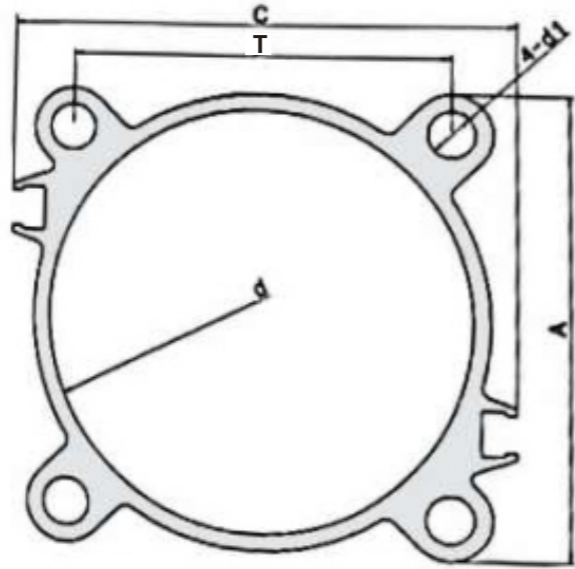
NO	d	d1	S	E	T
1	φ12	3.4	-	25	22x22
2	φ16	3.4	-	29	28x28
3	φ20	5.3	-	36	36x36
4	φ25	5.3	-	40	40x40
5	φ32	5.3	49	45	34x34
6	φ40	5.5	57	53	40x40
7	φ50	6.9	70.8	64	50x50
8	φ63	8.9	83.2	76.5	60x60
9	φ80	10.5	104	98	77x77
10	φ100	10.5	123.5	117	94x94

ADN (φ12-100)系列
ADN (φ12-100) Series



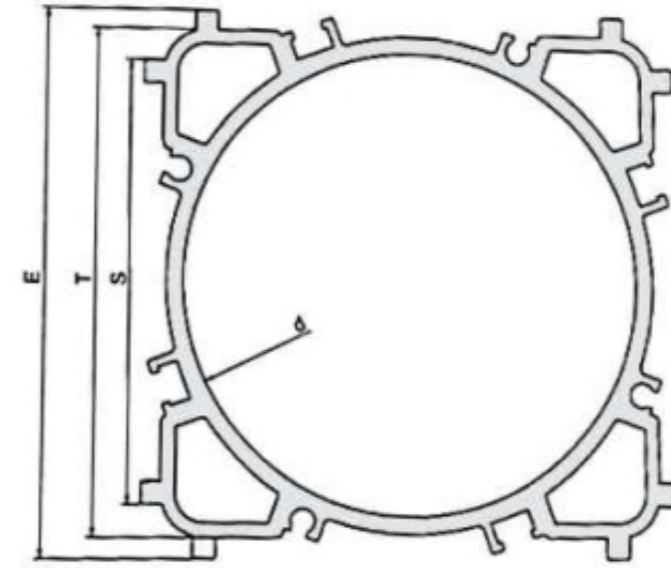
NO	d	4-d1	A	B1	C	B2
1	φ 12	φ 5.5	26.5	16	-	-
2	φ 16	φ 5.5	28	18	-	-
3	φ 20	φ 6.3	34.5	22	-	-
4	φ 25	φ 6.3	38.5	26	-	-
5	φ 32	φ 9.4	46.5	32.5	9.8	-
6	φ 40	φ 9.4	53.5	38	15.3	-
7	φ 50	φ 11.4	64	46.5	22	-
8	φ 63	φ 11.4	74.5	57	28.5	-
9	φ 80	φ 6.8	93	46	25	82
10	φ 100	φ 6.8	110	61	38	99

DNT (φ32-125)系列
DNT (φ32-125) Series



NO	d	4-d1	A	T	C
1	φ32	φ5.3	42.5	32.5x32.5	44.2
2	φ40	φ5.3	48	38x38	51.6
3	φ50	φ6.9	58.5	46.5x46.5	63.5
4	φ63	φ6.9	68.5	56.5x56.5	75.1
5	φ80	φ8.8	86	72x72	93.6
6	φ100	φ8.8	104	89x89	111.4
7	φ125	φ10.7	134	110x110	139

CP96 (φ32-100)系列
CP96 (φ32-100) Series



NO	d	S	E	T
1	φ32	34.4	46	42X42
2	φ40	40	53	47.4X47.4
3	φ50	49.5	64	59X59
4	φ63	60	74.4	69.4X69.4
5	φ80	76	94	87X87
6	φ100	95	113	106X106

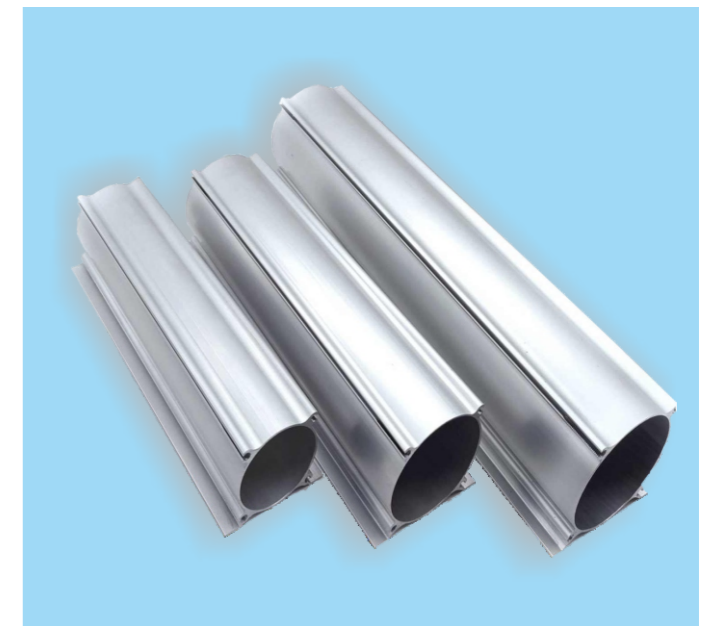
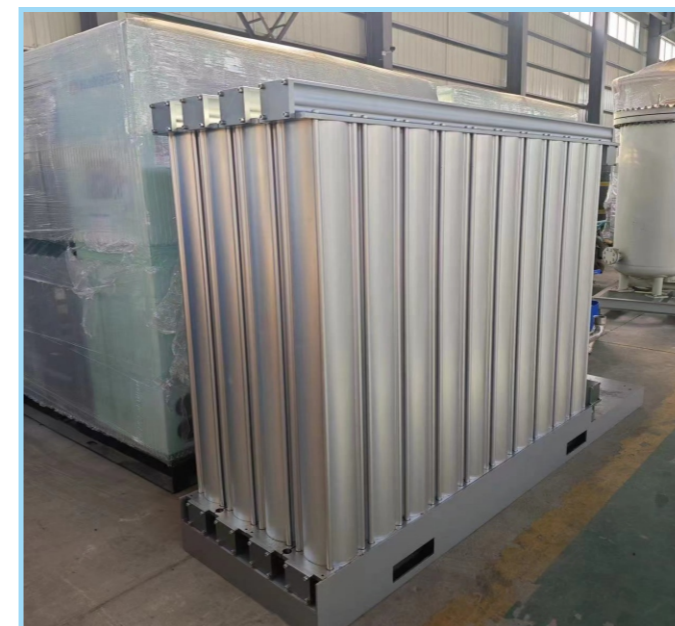
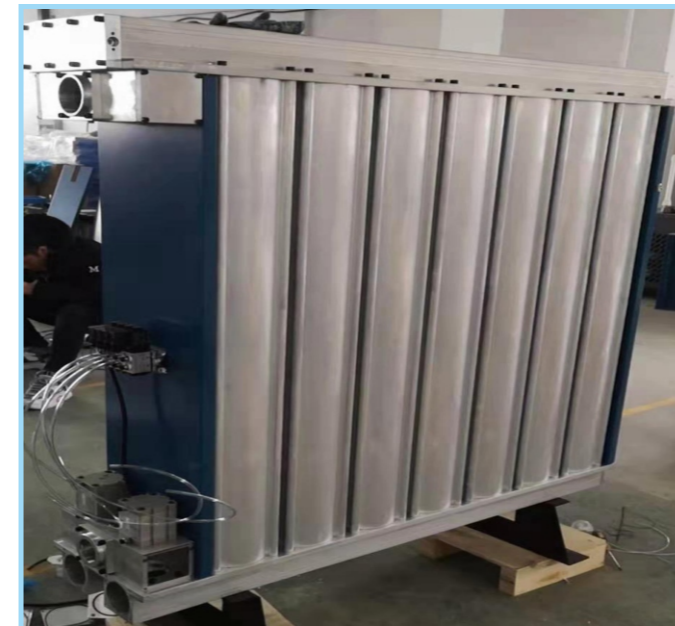
compressor cylinder、seal
压缩机气缸、皮碗



缸套规格 (Barrel size)	皮碗规格 (Seal size)
φ28.5*φ23*18.4	28.5*4*06
φ30*φ26*20.5	26*10*0.5
φ35*φ30*22.5	30*20*0.6
φ40*φ35*22.6	48*34.5*0.7/0.6
φ55.6*φ50.8*17	53.8*41.7*0.7/0.6
φ63*φ57.8*20.2	62*48*0.7
φ63*φ57.8*21.5	62*48*0.8
φ69*φ63.7*21.5	68*48*0.8
φ69*φ63.7*22	68*48*1.0
φ75*φ69.7*24.4	74.5*56.5*1.0
φ75*φ69.7*45.9	74.5*56.5*1.2
φ75*φ69.7*47.5	74.5*56.5*1.5

oxygen manchine molecular sieve tube
分子筛筒

Accept customization
接受定制



MOLECULAR SIEVE

stainless steel cylinder tube 不锈钢气缸管



不锈钢气缸筒规格参数

产品规格 Product specifications	技术要求 technical requirement							
	内径 ID	公差 tolerance	外径 OD	公差 tolerance	壁厚 thickness	圆度 roundness	直线度 Straightness	内壁光洁度 degree of finish
φ6xφ7	φ6	0.04/0	φ7	±0.05	0.5	0.03	1.5mm/m	Ra≤0.4μm
φ8xφ9	φ8	0.04/0	φ9	±0.05	0.5	0.03	1.5mm/m	Ra≤0.4μm
φ10xφ11	φ10	0.04/0	φ11	±0.05	0.5	0.03	1.2mm/m	Ra≤0.4μm
φ12xφ13.4	φ12	0.04/0	φ13.4	±0.05	0.7	0.03	1.2mm/m	Ra≤0.4μm
φ16xφ17.4	φ16	0.05/0	φ17.4	±0.05	0.7	0.03	1mm/m	Ra≤0.4μm
φ20xφ21.4	φ20	0.06/0	φ21.4	±0.05	0.7	0.04	1mm/m	Ra≤0.4μm
φ25xφ26.4	φ25	0.06/0	φ26.4	±0.05	0.7	0.04	1mm/m	Ra≤0.4μm
φ32xφ33.6	φ32	0.07/0	φ33.6	±0.05	0.8	0.05	1mm/m	Ra≤0.4μm
φ40xφ41.6	φ40	0.07/0	φ41.6	±0.05	0.8	0.05	1mm/m	Ra≤0.4μm
φ50xφ52	φ50	0.08/0	φ52	±0.07	1	0.05	1mm/m	Ra≤0.4μm
φ63xφ65	φ63	0.08/0	φ65	±0.07	1	0.05	1mm/m	Ra≤0.4μm
无杆气缸系列 Rod less cylinder series								
φ16xφ18	φ16	0.05/0	φ18	±0.05	1	0.03	1mm/m	Ra≤0.4μm
φ20xφ22.8	φ20	0.06/0	φ22.8	±0.05	1.4	0.04	1mm/m	Ra≤0.4μm
φ25xφ27.8	φ25	0.06/0	φ27.8	±0.05	1.4	0.04	1mm/m	Ra≤0.4μm
φ32xφ35	φ32	0.07/0	φ35	±0.05	1.5	0.05	1mm/m	Ra≤0.4μm
φ40xφ43	φ40	0.07/0	φ43	±0.05	1.5	0.05	1mm/m	Ra≤0.4μm

cylinder kits 端盖



气缸套件	缸径										
型号	32	40	50	63	80	100	125	160	200	250	320
DNC	✓	✓	✓	✓	✓	✓	✓				
DNG	✓	✓	✓	✓	✓	✓	✓	✓	✓	✓	✓
SI	✓	✓	✓	✓	✓	✓	✓	✓	✓		
SC	✓	✓	✓	✓	✓	✓	✓	✓	✓	✓	✓
DSBC	✓	✓	✓	✓	✓	✓					

PISTON ROD 活塞杆



直径/Dimension: $\Phi 6 \sim 250\text{mm}$

直径公差/Tolerance: ISO f7/定制 On request

圆度/Roundness: $\leq 1/2$ 公差 Diameter tolerance

供货长度/Standard length: $< \Phi 30\text{mm}$, 2~3mts/定长 On request cut length
 $\geq \Phi 30\text{mm}$, 3~6mts/定长 On request cut length

表面粗糙度/Surface Roughness: $Ra \leq 0.2$

镀层厚度/Chrome layer thickness: $\Phi < 20\text{mm}$: min. 15um
 $\Phi \geq 20\text{mm}$: min. 20um

镀层硬度/Chrome layer Hardness: HV850~HV1050

直线度/straightness: 0.15/1000mm

耐腐蚀试验标准/Evaluation Corroseton Test: ISO 10289:1999, IDT

交货状态/Delivery condition: 普通, 调质, 表面淬火

NORMAL, QT, INDUCTION HARDENED

PISTON ROD

TECHNICAL NOTE 技术说明

材质

Aluminum alloy cylinder is one of the main raw materials for automatic cylinder production. The cylinder material of the company is 6063-T5 after hard anodizing treatment, with good cutting performance. Good wear resistance, corrosion resistance and other advantages, especially after internal and external oxidation of aluminum gold cylinder material greatly improve the quality of products, prolong the service life.

铝合金汽缸是汽缸自动化生产的主要原料之一。本公司汽缸材质为6063-T5，经硬质阳极氧化处理，切削性能好。具有良好的耐磨性、耐腐蚀性等优点，特别是经过内外氧化处理的铝金缸体材料

化学成分 Chemical Composition		Mg	Si	Fe	Cu	Mn	Cr	Zn	Ti
		0.81	0.41	0.23	<0.08	<0.08	<0.04	<0.02	<0.05
Specification for Al Tubes									
力学性能 力学性能 检验结果	指标名称 Tension Intensity (N/mm ²)	屈服强度 Yield Strength (N/mm ²)	延伸度 Ductility (%)	硬度 Suctility Hardness	内径公差 Internak Diamanter Accuracy	内表面粗度 Internal Roughness	直线度 Straightness	厚度公差 Thickness Error	
	Sb 157	S0.2 108	S 8	Hw12	H7-H9	Ra0.2-0.3	1/1000	± 1%	

生产流程图

